

# Directions to:

**Arivaca Independent Filmmakers Exhibition**  
**Arivaca Dance Hall – Main Street**  
**ARIVACA, AZ 85601**



Border Patrol  
U.S. Citizen  
Check-Point

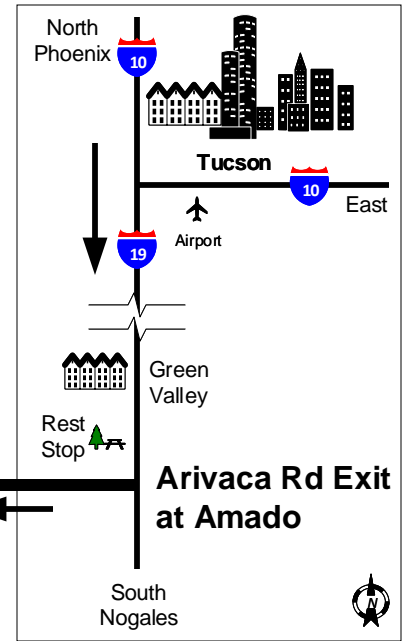


Approximately  
**23 Miles**  
between  
Amado  
and Arivaca

**Arivaca  
Road**

For information;  
accommodations and  
tourist info on  
Arivaca visit  
[www.visitarivaca.com](http://www.visitarivaca.com)

DIRECTIONS TO THE ARIVACA DANCE HALL: Take Interstate 19, South from Tucson to Arivaca Road exit at Amado. At end of Exit ramp take right, then right again at stop sign. Take Left onto Arivaca Road (just past Cow Palace Restaurant). Follow Arivaca Road approx. 23 miles to Arivaca. Continue to follow road into the historic Arivaca townsite (Main Street). The Dance Hall is at the West end of town on the left at the corner of Ruby Road.



**Universal Ranch Road**



Fire Department



Arivaca  
Community  
Center



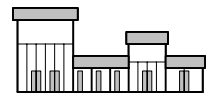
Action  
Center



Universal  
RV Park

Jackelope Rd

Jalisco Road



ARIVACA TOWNSITE  
Artist's Co-op / Gas  
General Store  
Library

West to Sasabe



Wildlife  
Refuge viewing  
area

Mesquite Road

Arivaca Ranch Road

Hardscrabble Road



La Siesta  
Campgrounds

Arivaca  
Dance Hall

**EVENT  
LOCATION**